

Water & Sanitation

OUR CONTRIBUTION TO THE SUSTAINABLE DEVELOPMENT GOALS

2023

The projects financed in 2023 will allow



SDG
target 6.2

7.7 million people
to benefit from
a safely managed
sanitation service*



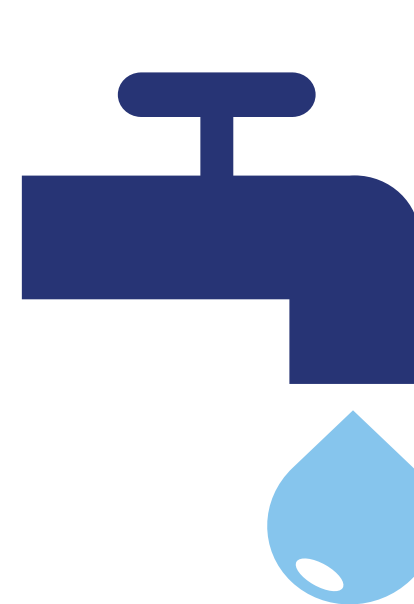
SDG
target 6.3

1.7 million
population equivalent
of wastewater
treatment capacity



SDG target 1.4
Access to basic
services

79,500 people
to benefit from a basic
sanitation service



SDG
target 6.1

12 million people
to benefit from a safely
managed drinking water
supply service*



SDG target 1.4
Access to basic
services

219,000 people
to benefit from a basic
drinking water supply
service



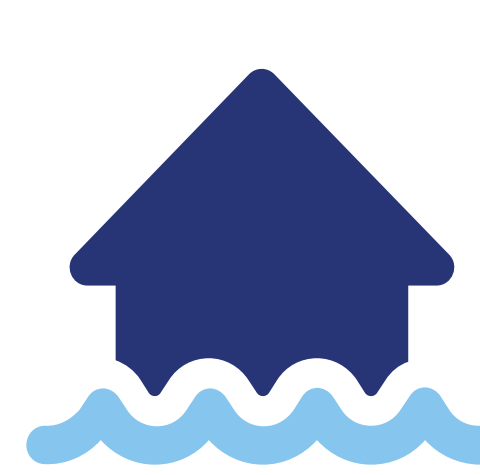
SDG
target 3.9
Reduce mortality
from environmental
pollution

268,000 people
to benefit from hygiene and water
use awareness campaigns

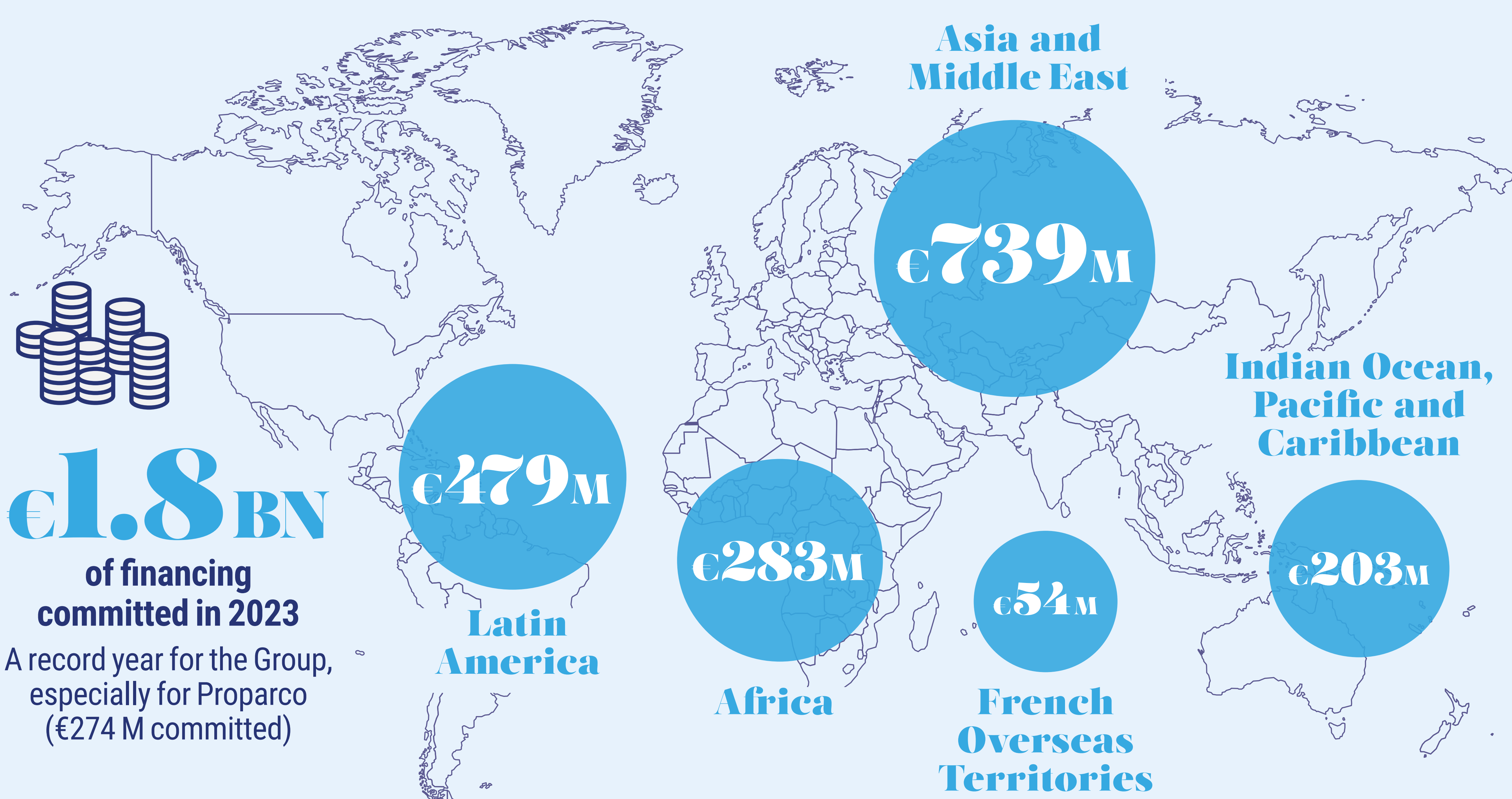


SDG
target 11.5
Reduce the adverse
effects of natural
disasters

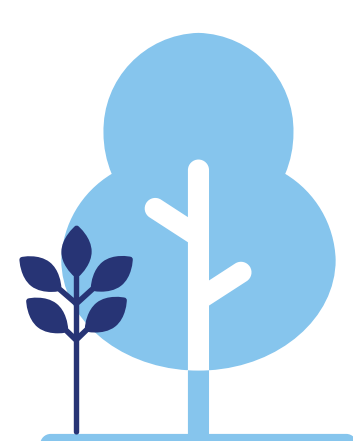
352,000 people
to benefit from flood risk
management facilities/
equipment



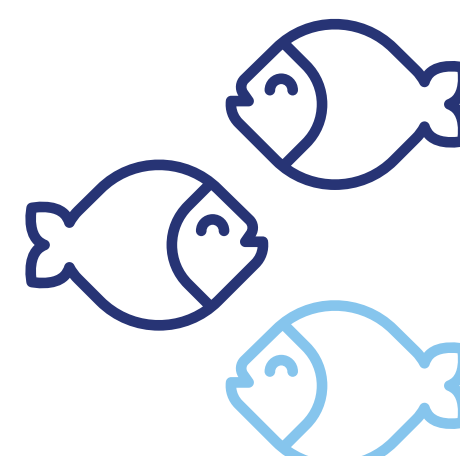
*These expected outcomes cover AFD and Proparco.
A project financed by Proparco in the State of Rio de Janeiro
alone accounts for 5.4 million beneficiaries for drinking water
and 3.3 million for sanitation.



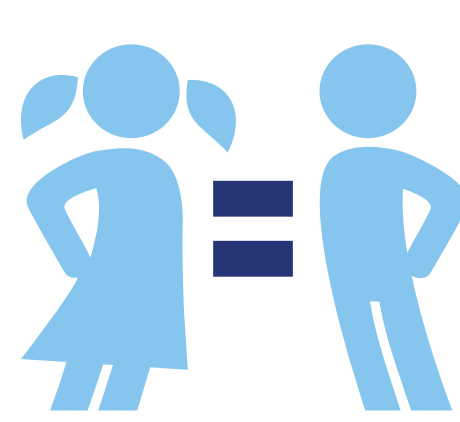
A transversal contribution to the SDGs



89%
of commitments contribute to **climate change**
adaptation and mitigation



25%
preserve and restore **ecosystems**



58%
have a positive impact
on **gender equality**



Brazil
Rehabilitation and
extension of water
and sanitation
services for
10 million residents
of the State of
Rio de Janeiro

[Find out more](#)

Mauritius
A transformational
reform of the sector
to preserve **stretched**
resources and increase
access to water
and sanitation

[Find out more](#)

Multi-country
Support to 100
feminist organizations
to **improve menstrual**
health and hygiene

[Find out more](#)

Partnerships to increase financing for the sector and to explore emerging themes



↘ **Water Finance Coalition**
[Find out more](#)

↘ **WHO**

↘ **Sanitation and Water for All**

↘ **Bill & Melinda Gates Foundation**
[Find out more](#)

↘ **GRET**