

# Sahel

ACTIVITY REPORT

**2022**

**T**he Greater Sahel was once a prosperous region in Africa and home to the largest African empire. It was a space for transit and trade between North Africa and the Gulf of Guinea. The region is clearly defined by its geography and climate. It also has the lowest GDP per capita of the six African regions identified by AFD.

Over the past decade, the deterioration of the security situation has profoundly destabilized the Central Sahel, with spillover effects throughout the region and even beyond. The context here is one of severe governance crisis, marginalization, exclusion and inequality among the region's territories and inhabitants. Weakened social cohesion has led to increasingly violent and uncontrolled conflict. In addition, the political turmoil that is spreading in Mali and Burkina Faso, the latter hit by two coups in eight months, is symptomatic of increasingly weak institutions. In light of the political and security situation, the French Ministry for Europe and Foreign Affairs announced the country's decision to end official development assistance in Mali.

Yet these complex and multidimensional challenges should not overshadow the positive trends observed in the region in recent years. Along with East Africa, the Sahel is the fastest-growing region in Africa. The Greater Sahel region's annual HDI has also been improving at a rate nearly three times faster than the rest of the world over the past three decades.

# AFD strategy in the Greater Sahel region

**AFD focused on five priorities:**



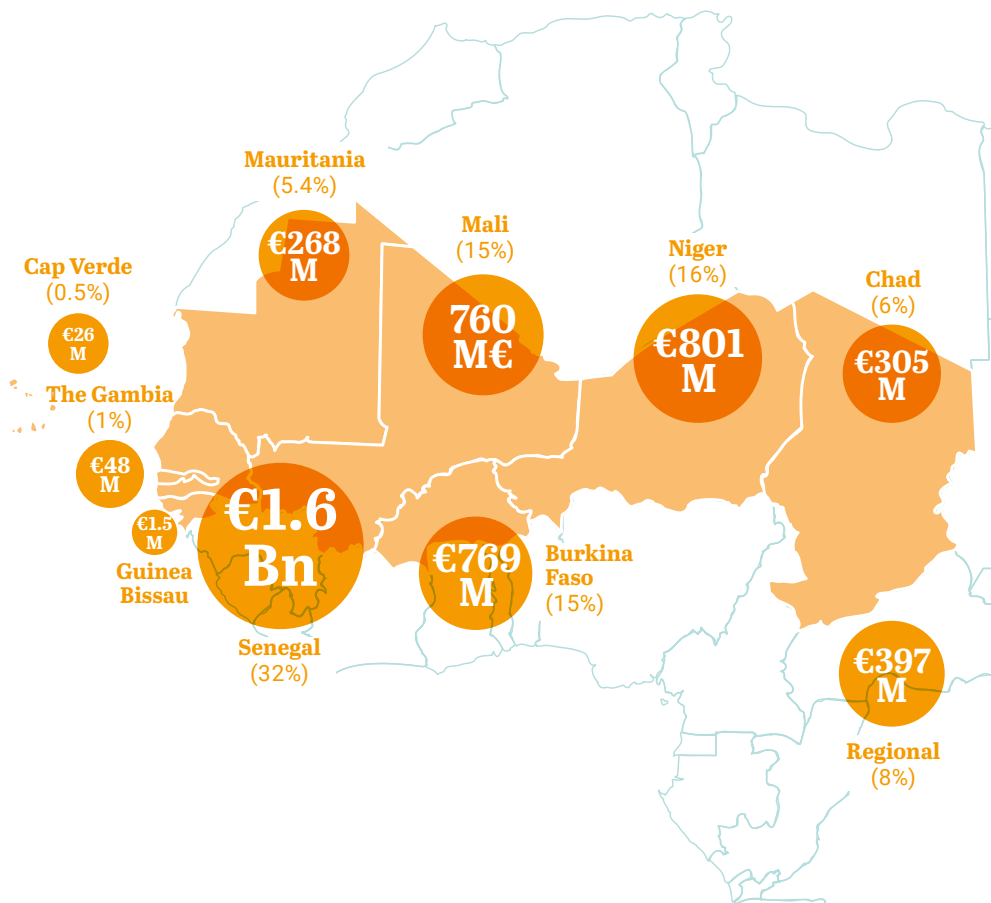
Development in the Greater Sahel region is marked by contrasts. The wide range of issues require a collective and appropriate response that addresses weaknesses and improves fair access to basic services. France is a key player in this region, and AFD has adopted a multidisciplinary approach that is rooted in the local territories.

AFD Group's activities in G5 Sahel countries are guided by the framework established by the Sahel Alliance.

AFD Group ensures that each intervention helps strengthen social ties between citizens, in keeping with its 100% social link commitment. It also ensures that each funding initiative contributes to resilient and low-carbon sustainable development, in keeping with its 100% Paris Agreement commitment.

# Our activity in the Greater Sahel region in 2022

○ GEOGRAPHICAL BREAKDOWN OF THE PORTFOLIO OF PROJECTS UNDERWAY AS OF 31/12/2022



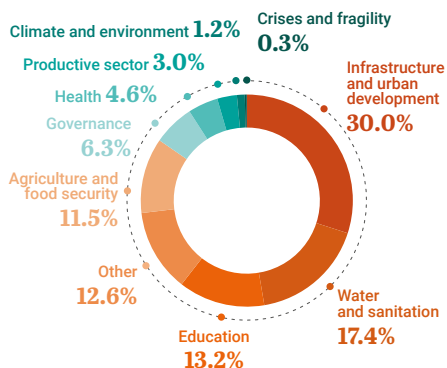
**369** projects underway

in the Greater Sahel region as of 31/12/2022

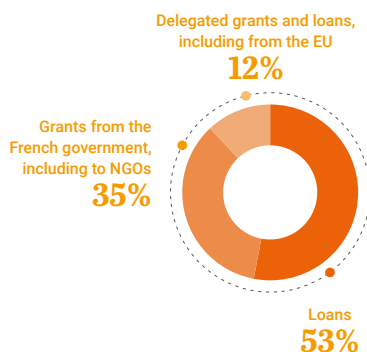
for a total amount of **€5Bn**

In light of the political and security situation, on November 16, 2022, the French Ministry for Europe and Foreign Affairs announced the country's decision to end official development assistance in Mali. AFD therefore suspended all its activities in the country in November 2022.

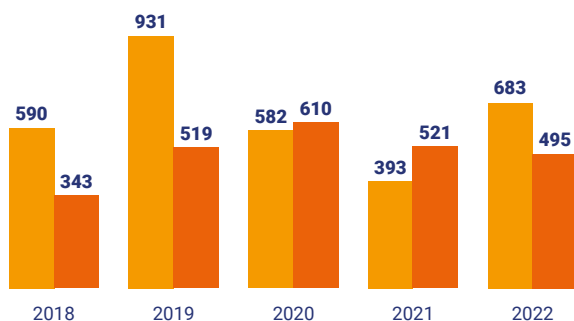
## BREAKDOWN BY SECTOR



## BREAKDOWN BY INSTRUMENT



## TREND IN COMMITMENTS\* AND PAYMENTS\*\* SINCE 2018 IN €M



**€6.3 Bn**  
committed in the Greater Sahel region since 2012

\* Funding of projects approved by AFD bodies

\*\* All disbursements made on projects funded by AFD, which began during the current and previous years.

## Key portfolio information for 2022

- €162 million for Minka Facility projects in Sahel to address the crisis and prevent it from spreading to Gulf of Guinea countries
- €85M for projects with the key objective of reducing inequalities between men and women (DAC 2)
- An increase in activities linked to the Sports and Development Agenda with a commitment of €45 million in Senegal to organize the 2026 Youth Olympic Games
- Launch of an €8.5 million crisis and crisis recovery call for projects (APCC) for civil society organizations to strengthen the resilience of food systems and prevent conflicts over the use of natural resources in the Great Green Wall countries.

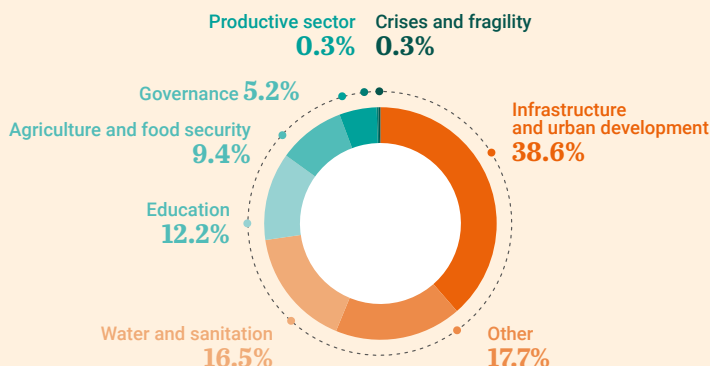
# Our activity in Burkina Faso

AFD is a long-term partner of the authorities in Burkina Faso. It has been working in the country for over 60 years to support access to basic services (water, sanitation, education/training, energy) and agricultural and local development, with a focus on support for public policies and institutions. In light of the sharp deterioration of the security and humanitarian situation, AFD is increasing its activities in areas experiencing intense security challenges by supporting more projects implemented by civil society organizations. It also systematically integrates the issues of vulnerabilities and risks of conflict into all its activities.

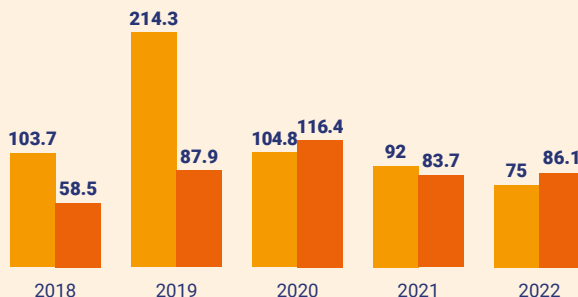
## PORTFOLIO OF PROJECTS UNDERWAY AS OF 31/12/2022



## BREAKDOWN BY SECTOR IN 2022



## TREND IN COMMITMENTS AND PAYMENTS SINCE 2018 (IN €M)



\*56% in loans, 32% in grants from the French government (including NGOs), 12% in delegated grants and loans (including from the EU)

# Our activity in Mali

Mali suffers from significant structural weaknesses (arid climate, economy based on a small number of commodities, weak public governance). It has also been plagued by a security crisis in the north and center of the country since 2012-2013, and a severe governance crisis leading to coups d'état in 2020 and 2021.

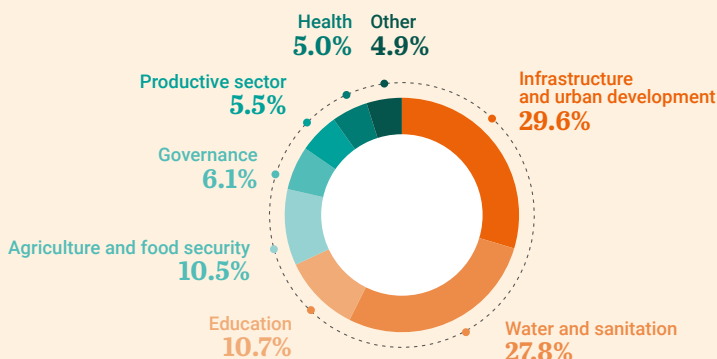
In light of the political and security situation, on November 16, 2022, the French Ministry for Europe and Foreign Affairs announced the country's decision to end official development assistance in Mali. AFD therefore suspended all its activities in this country in November 2022.

## PORTFOLIO OF PROJECTS UNDERWAY AS OF 31/12/2022

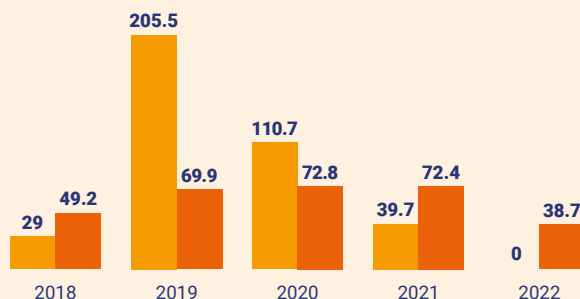


**€760M\*** | **45** projects

## BREAKDOWN BY SECTOR IN 2022



## TREND IN COMMITMENTS AND PAYMENTS SINCE 2018 (IN €M)



\*56% in loans, 10% in grants from the French government (including NGOs), 34% in delegated grants and loans (including from the EU)

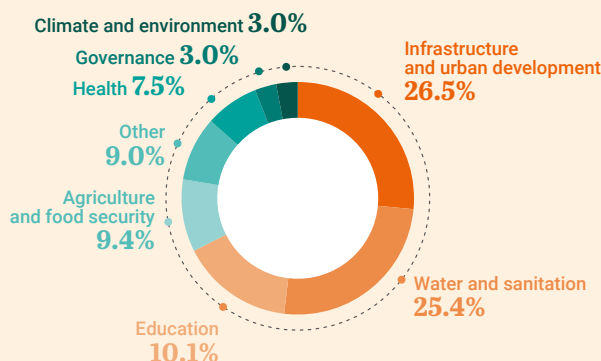
# Our activity in Mauritania

Mauritania acts as a link between the Maghreb and Sub-Saharan Africa and is home to a wealth of cultural and ethnic diversity. The country has posted sustained growth in recent years. AFD is seeking to strengthen social cohesion and support sustainable and shared growth through its intervention in Mauritania. The Nouakchott field office is leading the Integrated Territorial approach (ATI) adopted by the members of the Sahel Alliance in Mauritania.

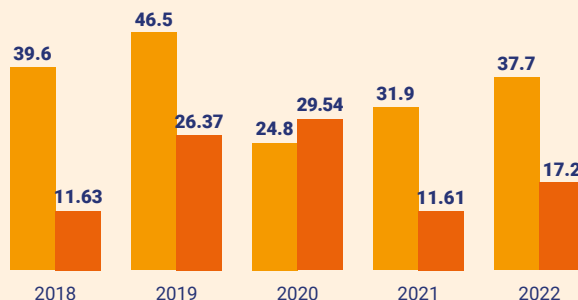
## ○ PORTFOLIO OF PROJECTS UNDERWAY AS OF 31/12/2022



## ○ BREAKDOWN BY SECTOR IN 2022



## ○ TREND IN COMMITMENTS AND PAYMENTS SINCE 2018 (IN €M)



\*15% in loans, 11% in grants from the French government (including NGOs), 74% in delegated grants and loans (including from the EU)



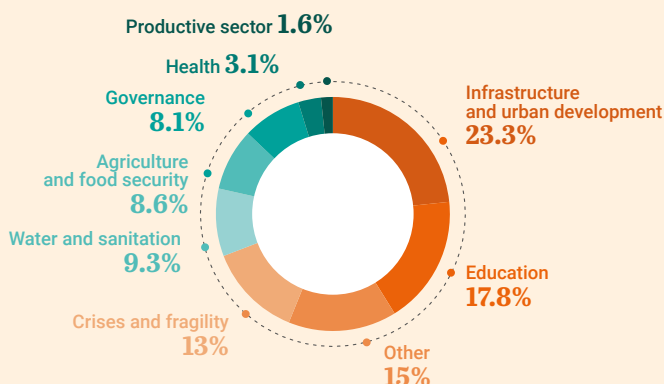
# Our activity in Niger

Niger has the world's highest population growth (3.8% per year). The country must accelerate its development in the midst of disruptions caused by political and security crises in the Sahel and the effects of climate change. However, the country is maintaining democratic processes by relying on its assets, including national cohesion, which remains intact, natural resources, strong agricultural potential, and an international community mobilized to offer support.

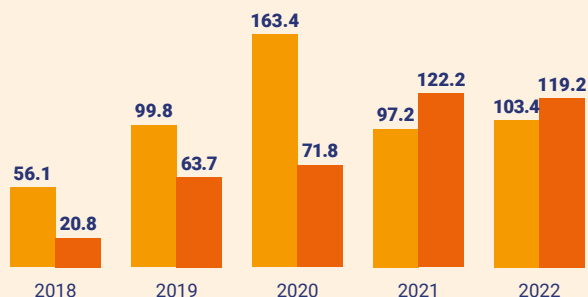
## PORTFOLIO OF PROJECTS UNDERWAY AS OF 31/12/2022



## BREAKDOWN BY SECTOR IN 2022



## TREND IN COMMITMENTS AND PAYMENTS SINCE 2018 (IN €M)



\*45% in loans, 35% in grants from the French government (including NGOs), 20% in delegated grants and loans (including from the EU)

# Our activity in Senegal

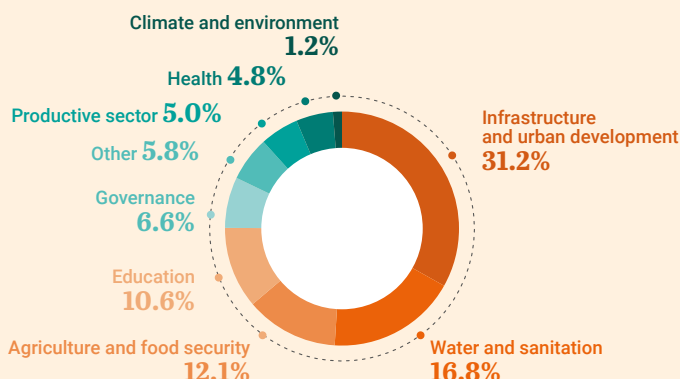
Senegal is an area of stability in West Africa and the Sahel in particular, with dynamic economic growth despite continuing weaknesses.

AFD Group is funding programs that are in line with the priorities established by the Senegalese government in its Emerging Senegal Plan. For the 2019-2023 period, it has therefore prioritized action contributing to the emergence of an inclusive and sustainable society in Senegal by supporting the development of opportunities for the country's young people.

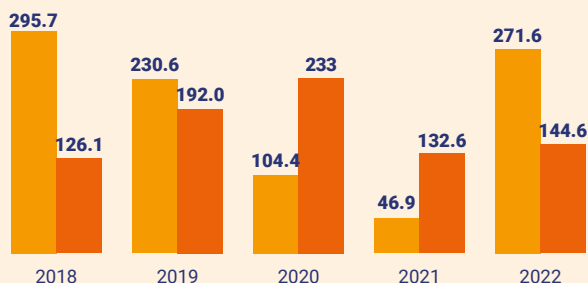
## PORTFOLIO OF PROJECTS UNDERWAY AS OF 31/12/2022



### BREAKDOWN BY SECTOR IN 2022



### TREND IN COMMITMENTS AND PAYMENTS SINCE 2018 (IN €M)



\*\*78% in loans, 14% in grants from the French government (including NGOs), 8% in delegated grants and loans (including from the EU)

# Our activity in Chad

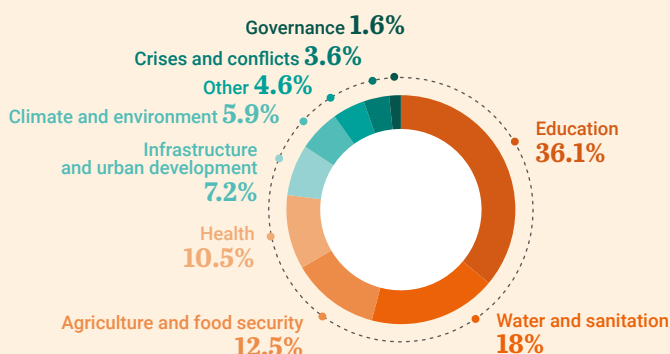
Chad is a landlocked country in Central Africa that suffers from an undiversified economy, high vulnerability to climate change and security threats at its borders. However, the country has many assets, which AFD is working to enhance to promote inclusive, sustainable and peaceful development. AFD's funding focuses on four areas: the education-training-employment-entrepreneurship continuum, access to basic services and a decent living conditions, territorial development and environmental protection, and good governance and conflict prevention.

## PORTFOLIO OF PROJECTS UNDERWAY AS OF 31/12/2022

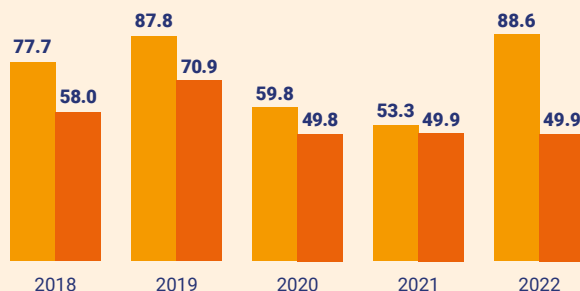


**€305M\*** | **34** projects

## BREAKDOWN BY SECTOR IN 2022



## TREND IN COMMITMENTS AND PAYMENTS SINCE 2018 (IN €M)



\*77% in grants from the French government (including NGOs), 23% in delegated grants and loans (including from the EU)

# Our activity in the Gambia

In 2018, France designated the Gambia as a priority country for international cooperation and development. For AFD, this has opened up new opportunities for intervention. AFD has responded to the priorities in the Gambia by committing nearly €50 million in grants since 2018, primarily to support access to water, agriculture and biodiversity conservation.

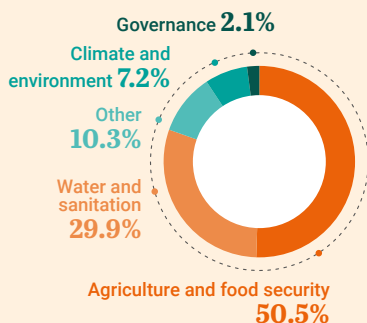
## PORTFOLIO OF PROJECTS UNDERWAY AS OF 31/12/2022



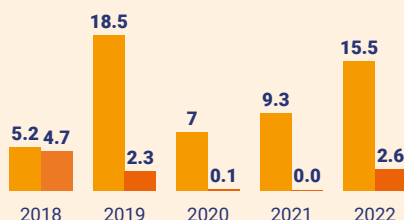
€48.5M\*

8 projects

### BREAKDOWN BY SECTOR IN 2022



### TREND IN COMMITMENTS AND PAYMENTS SINCE 2018 (IN €M)



# Our activity in Guinea Bissau

Since 2020, as part of a renewed bilateral relationship between Guinea-Bissau and France, AFD has provided a few grants to support high-impact measures for young people in the areas of agricultural vocational training and the renovation of sports facilities in schools.

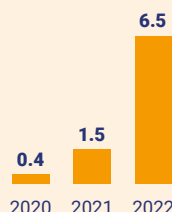
## PORTFOLIO OF PROJECTS UNDERWAY AS OF 31/12/2022



€1.5M\*

1 project

### TREND IN COMMITMENTS SINCE 2020 (IN €M)



\*100% in grants from the French government (including to NGOs)

# Results

The projects undertaken by AFD Group in the Sahel in 2021 contributed to:



## HEALTH

• **6,077,047 people**  
have better access to healthcare



## ENERGY

• **1,197,112 people**  
have better access to  
electrical services



## WATER AND SANITATION

• **1,336,509 people**  
have access to  
safe drinking water



## URBAN DEVELOPMENT

• **2,540,330 people**  
have better access to  
a sustainable urban  
transport system



## EDUCATION

• **2,805,934** children are  
enrolled in elementary  
and middle school,  
62% are girls



## AGRICULTURE AND RURAL DEVELOPMENT

• **2,317,019 hectares** benefit  
from programs to  
restore / protect biodiversity



## VOCATIONAL TRAINING

• **32,000 people** benefit from  
vocational and technological training



## ALLIANCE SAHEL

**France, the EU and Germany launched the Sahel Alliance, a platform for Sahel donors, in 2017. It now brings together 27 members and 9 observers, who together support over 1,200 projects, both pending and completed, for a total amount of €26.5 billion.**

In addition to the significant amounts committed and under appraisal, the Alliance members are united by a common vision and concepts: the Integrated Territorial Approach (Approche Territoriale Intégrée-ATI). The Sahel Alliance adopted the ATI during the Operational Steering Committee meetings in 2020, which established the Alliance's procedures for implementing the ATI in ten priority areas selected in consultation with national authorities. One or more leaders are in charge of facilitating, coordinating and engaging with Sahel Alliance members and local or regional authorities to develop joint intervention programs in these areas.

AFD is the leader for donors investing in Hodh Ech Chargui in Mauritania, Tillabéri in Niger, Kanem and Bahr el Gazel in Chad, and Dori in Burkina Faso. In November 2022, the Sahel Alliance launched the initiative to operationalize the Ayorou ATI (Tillabéry region). This reflects the goal to achieve better coordination between donors within this department located 200 km from Niamey (PDU Emergency Development Program, Local Development Support Project for the Kandaji three-border stabilization program). This experimentation at the departmental level will be replicated if it is successful. In addition, the new task group on the crisis spill-over effects in the Sahel aims to develop preventive strategies for the cross-border areas.

---

## A strengthened cross-border approach

---

AFD aims to develop its actions in the cross-border areas to prevent the development of crescents of crisis and contagion (eastern Senegal, northern Guinea, Republic of Côte d'Ivoire, Ghana, Togo and Benin), in particular by expanding the geographical scope of the Minka Peace and Resilience Facility.

In 2022, the first cross-border project, "Yeretali", was appraised in 2022 (€16M including €13M for Burkina Faso) to strengthen the resilience of communities (displaced persons and hosts) and their social cohesion, amid security and socio-economic turmoil in the border areas of Burkina Faso and Côte d'Ivoire.

---

---

## Contribution to the G5 Sahel Facility

---

In November 2022, AFD allocated a contribution of €5 million, making it the first donor to fund the G5 Sahel Facility, supported by BMZ and KfW, in close coordination with the G5 Sahel Executive Secretariat.

The Facility has an initial amount of €50 million and is run as a non-profit foundation under German civil law, an independent legal instrument which can absorb funding from other donors for a ten-year period.

The operating method prioritizes cooperation with NGOs (international and national) through calls for proposals by target region, for projects with an average amount ranging between €5M and €10M. As part of the Minka initiative, this French contribution will send a positive message to mobilize other partners.

---

### MINKA PEACE AND RESILIENCE FUND



The Minka Peace and Resilience Fund Sahel and Lake Chad Initiatives, launched in 2017, are AFD's response to the crises and violent conflicts threatening countries in the Sahel. They help finance development projects with shorter implementation deadlines and evident results for the population within six months, all for the goal of peace-building.

These projects focused on infrastructure renovation, hydro-agricultural development, highly labor-intensive work projects, and social mediation and peace-building efforts. The projects benefit the most vulnerable individuals (marginalized groups, displaced persons and host population).

Minka projects also support activities to benefit youth and promote gender equality.

---

## Towards a world in common

---

Agence Française de Développement (AFD) implements France's policy on international development and solidarity. Through its financing of NGOs and the public sector, as well as its research and publications, AFD supports and accelerates transitions towards a fairer, more resilient world. It also provides training in sustainable development (at AFD Campus) and other awareness-raising activities in France.

With our partners, we are building shared solutions with and for the people of the Global South. Our teams are at work on more than 4,000 projects in the field, in the French Overseas Departments and Territories, in 115 countries and in regions in crisis. We strive to protect global public goods – promoting a stable climate, biodiversity and peace, as well as gender equality, education and healthcare. In this way, we contribute to the commitment of France and the French people to achieve the Sustainable Development Goals (SDGs). Towards a world in common.



[www.afd.fr](http://www.afd.fr)

Twitter: @AFD\_France - Facebook: AFDOfficiel - Instagram: afd\_france

5, rue Roland-Barthes -75598 Paris cedex 12 -France

Tél.: +33 1 53 44 31 31