



RÉPUBLIQUE
FRANÇAISE

*Liberté
Égalité
Fraternité*



Sahel

ACTIVITY REPORT

2020

#WorldInCommon

The Greater Sahel region was once a prosperous region in Africa and home to the largest African empire. It was a space for transit and trade between North Africa and the Gulf of Guinea. The region is clearly defined by its geography and climate. It also has the lowest GDP per capita of all the six African regions identified by AFD.

Over the past decade, the deterioration of the security situation has profoundly destabilized the Central Sahel, with spillover effects throughout the region and even beyond. The context here is one of severe governance crisis, marginalization, exclusion and inequality among the region's territories and inhabitants. Weakened social cohesion has led to increasingly violent and uncontrolled conflict.

Yet these complex and multidimensional challenges should not overshadow the positive trends observed in the region in recent years. Along with East Africa, the Sahel is the fastest-growing region in Africa (real growth of 4.9% between 2010 and 2019). The Greater Sahel region's annual HDI has also been improving at a rate nearly three times faster (1.9%) than the rest of the world (0.7%).

AFD strategy in the Sahel

AFD focused on five priorities:

1

Improving governance by reinforcing public action for the benefit of citizens and integration (administration, communities, etc.)

2

Preventing and containing violent conflict through a territorial approach

3

Promoting the empowerment of women and girls

4

Capacity building for local inhabitants, especially young people

5

Nurturing development potential through effective land use planning and support for sustainable economic activities

AFD Group's activities in the region are guided by the framework established by the G5 Sahel and the Coalition for the Sahel. AFD's intervention therefore complies with an integrated territorial approach developed in partnership with the members of the Sahel Alliance and the French team in the context of the Coalition for the Sahel. This approach is informed by local dynamics, the specific assets of the territories in question, and their relations of interdependency, with the aim of establishing integrated and multisectoral action at the department level.

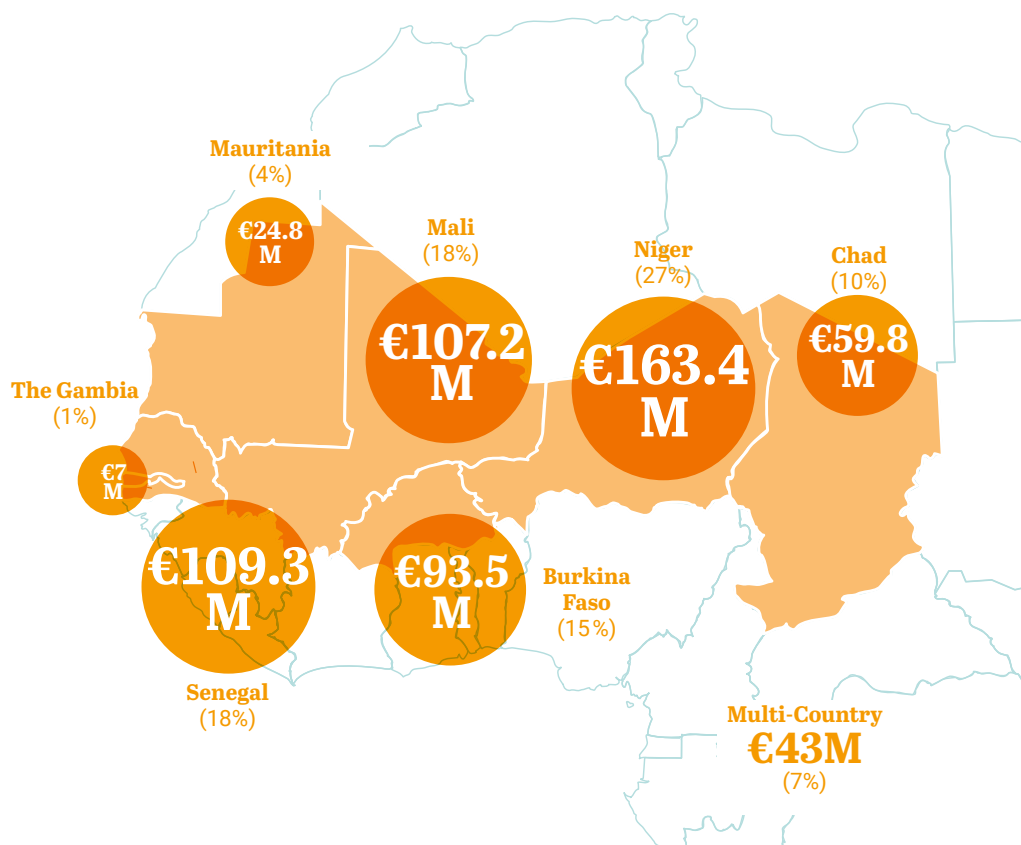
The regional strategy therefore aims to:

- Promote and operationalize the Integrated Territorial Approach within the framework of the Coalition for the Sahel and the Sahel Alliance;
- Engage in close dialog with national authorities, by working with the G5 and foreign partners;
- Establish joint mapping of the various interventions of donors in Central Sahel;
- Identify priority cities and define local performance indicators in partnership with the Secretariat of the Coalition for the Sahel.

AFD Group ensures that each intervention helps strengthen social ties between citizens, in keeping with its 100% social link commitment. It also ensures that each funding initiative contributes to resilient and low-carbon sustainable development, in keeping with its 100% Paris Agreement commitment.

Our activity in the Sahel in 2020

○ GEOGRAPHICAL BREAKDOWN OF COMMITMENTS

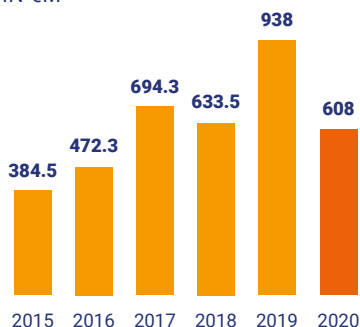


**€608
M**

Total commitments

In 2020, significant projects were granted in the three-borders zone, a focal point for the Coalition for the Sahel, representing over €65 million. These projects are aimed at strengthening the countries' governance, improving access to basic services and education, and implementing socio-economic investments promoting access to employment.

○ TREND IN COMMITMENTS IN €M



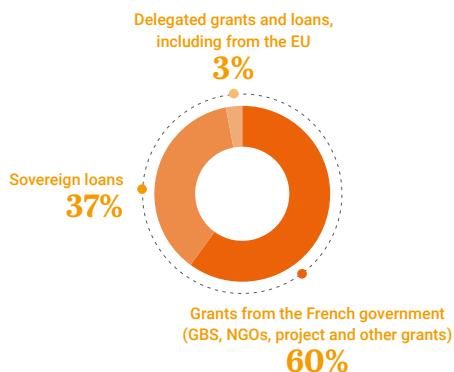
**€4.8
BN**

committed in Sahel
countries since 2013

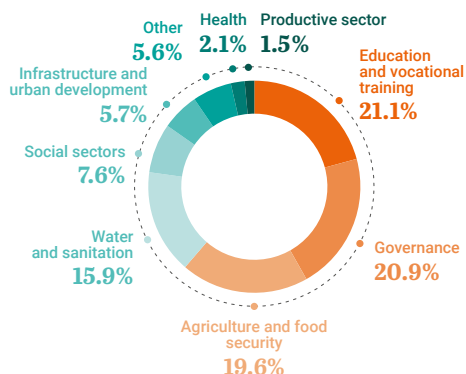
○ 2020 COMMITMENTS/PAYMENTS IN €M



○ BREAKDOWN BY INSTRUMENT



○ BREAKDOWN BY SECTOR



— The priority is to support the return of state authority —

State-building efforts are central to AFD's action. They focus on several areas:

- 1- State redeployment and decentralization (approximately €18 million granted in 2020) including support for planning, construction of prefectures and administrative buildings, roll-out of traveling public services in Mali and Niger, and deployment of civil protection in the three-border zone;
- 2- Justice and rule of law (€10 million granted in 2020) aimed at improving the criminal justice system and reinforcement of judicial staff;
- 3- Public finance and budget support (€34.5 million in 2020), notably for the deployment of public services by local authorities to fund hospitals, vaccination centers, infrastructure for access to water, food programs, and the response to the Covid-19 pandemic.

Our activity in Burkina Faso

AFD is a long-term partner of the authorities in Burkina Faso and has been operating in the country since 1958. Burkina Faso is one of the 19 priority countries for French aid. AFD is increasing its interventions in the country's hardest-hit regions in the North and East. It is integrating vulnerability and conflict risk issues into these initiatives through a territorial approach that targets the main determinants of conflicts, integration of social cohesion aspects and local governance, greater reliance on civil society stakeholders, and flexibility in implementing projects to account for changes in the situations.

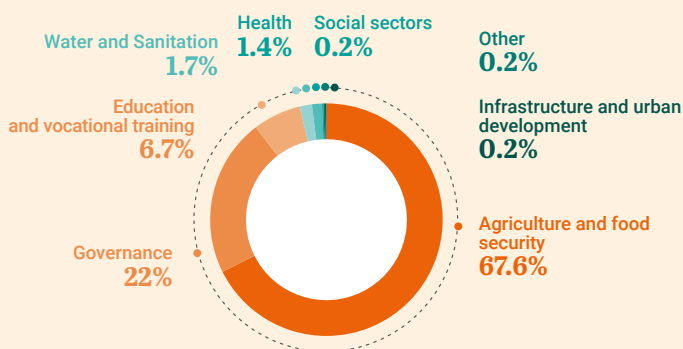
TOTAL COMMITMENTS IN 2020



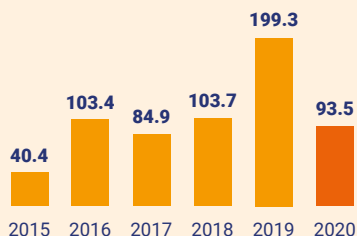
€93.5M

€116M disbursed

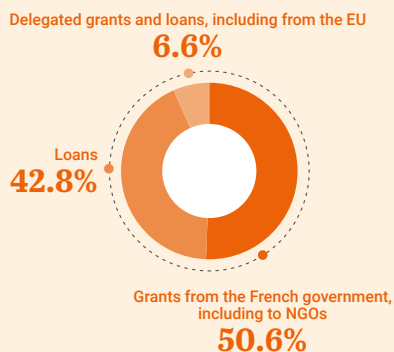
BREAKDOWN BY SECTOR IN 2020



TREND IN COMMITMENTS (IN €M)



BREAKDOWN BY INSTRUMENT IN 2020



Our activity in Mali

Despite significant structural weaknesses (arid climate, economy based on a small number of commodities, weak public governance) and a political and security crisis in the north and center of the country since 2012-2013, Mali has experienced sustained economic growth of 5% per year for the past ten years.

AFD is supporting the implementation of the 2015 Agreement for Peace and Reconciliation in Mali.

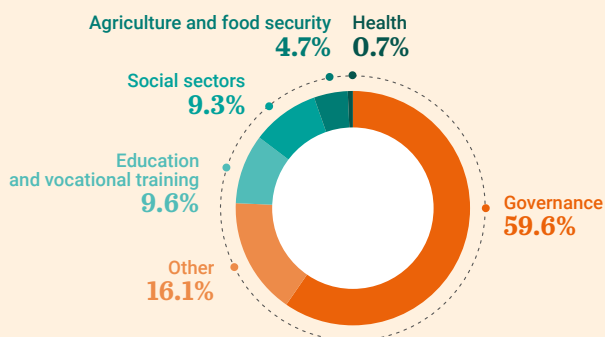
○ TOTAL COMMITMENTS IN 2020



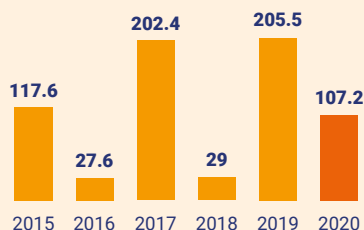
€107.2M

€72.8M disbursed

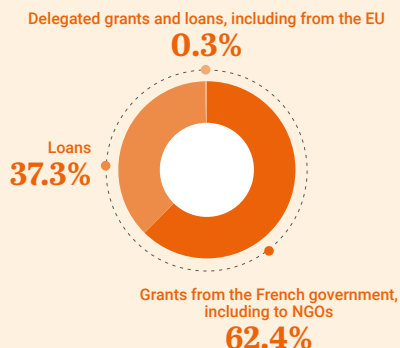
○ BREAKDOWN BY SECTOR IN 2020



○ TREND IN COMMITMENTS (IN €M)



○ BREAKDOWN BY INSTRUMENT IN 2020



Our activity in Mauritania

Mauritania acts as a link between the Maghreb and Sub-Saharan Africa and is home to a wealth of cultural and ethnic diversity. The country has recorded sustained growth in recent years. AFD is seeking to strengthen social cohesion and support sustainable and shared growth through its intervention in Mauritania, which was hit hard in 2020 by the Covid-19 pandemic.

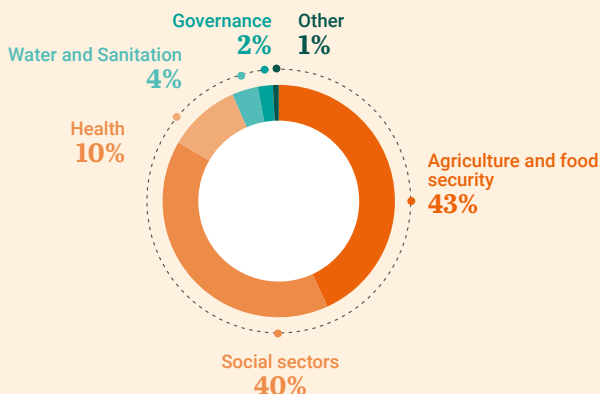
○ TOTAL COMMITMENTS IN 2020



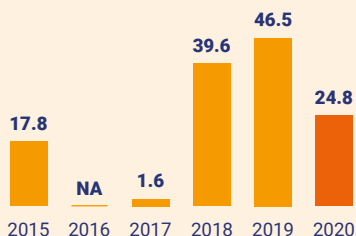
€24.8M

€29.5M disbursed

○ BREAKDOWN BY SECTOR FOR 2020



○ TREND IN COMMITMENTS (IN €M)



○ BREAKDOWN BY INSTRUMENT IN 2020



Our activity in Niger

Niger is the least developed country in terms of human development and has the world's highest population growth (3.8% per year). The country must accelerate its development in the midst of a challenging context caused by the security crisis in the Sahel (Tillabéri and Diffa) and the impacts of climate change. However, the country does have assets, including national cohesion, which remains intact, strong agricultural potential, and an international community mobilized to offer support.

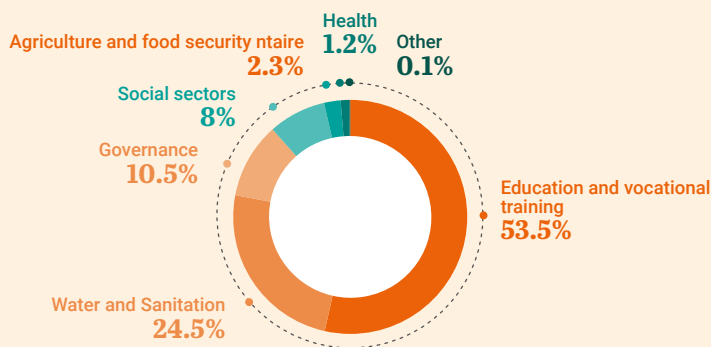
○ TOTAL COMMITMENTS IN 2020



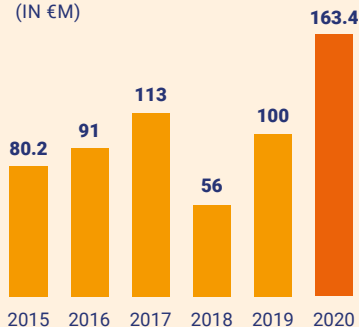
€163.4M

€71.8M disbursed

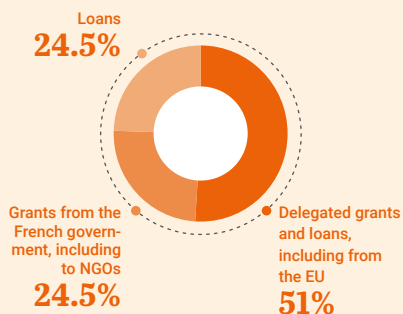
○ BREAKDOWN BY SECTOR IN 2020



○ TREND IN COMMITMENTS (IN €M)



○ BREAKDOWN BY INSTRUMENT IN 2020



Our activity in Senegal

Senegal is an area of stability in West Africa and the Sahel in particular, with dynamic economic growth despite continuing weaknesses.

AFD Group is funding projects and programs that are in line with the priorities established by the Senegalese government (Emerging Senegal Plan). It has therefore prioritized action contributing to the emergence of an inclusive and sustainable society in Senegal.

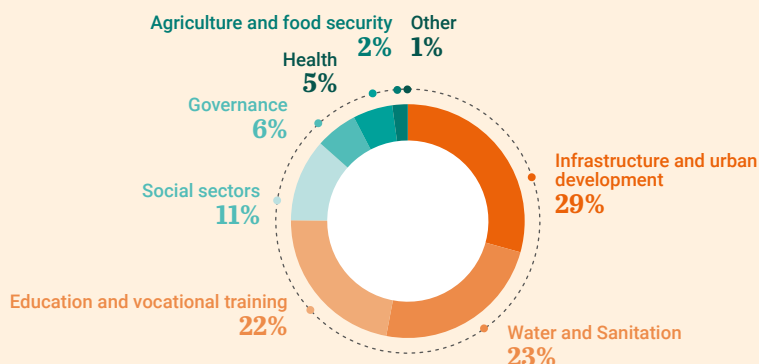
○ TOTAL COMMITMENTS IN 2020



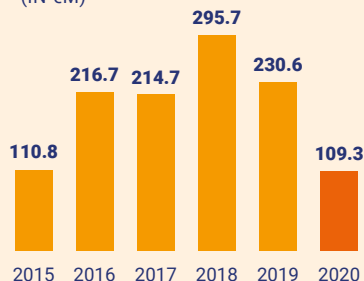
€109.3M

€233M disbursed

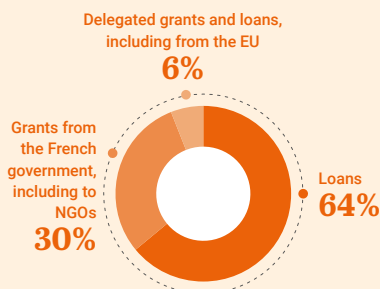
○ BREAKDOWN BY SECTOR IN 2020



○ TREND IN COMMITMENTS (IN €M)



○ BREAKDOWN BY INSTRUMENT IN 2020



Our activity in Chad

Chad is a landlocked country in Central Africa and suffers from vulnerable economic structures despite its many assets. AFD is acting to support and develop an economy that benefits everyone. AFD's funding focuses on four sectors: access to basic services in urban settings; rural development, with long-standing and significant action to support long-term migratory livestock farming; maternal, child and reproductive health; improvement of the educational system.

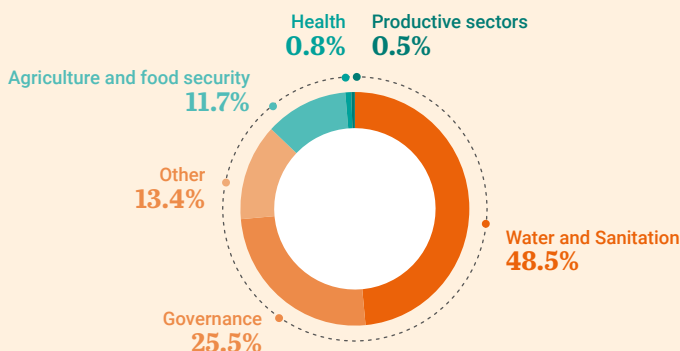
○ TOTAL COMMITMENTS IN 2020



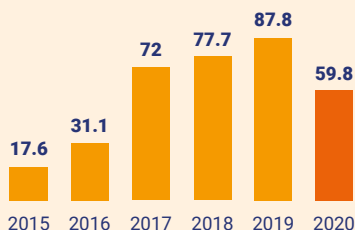
€59.8M

€49.9M disbursed

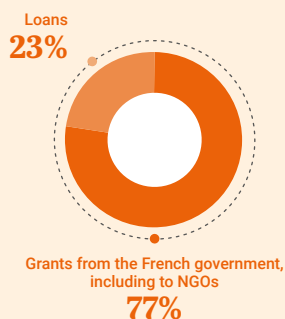
○ BREAKDOWN BY SECTOR



○ TREND IN COMMITMENTS (IN €M)



○ BREAKDOWN BY INSTRUMENT IN 2020



Results

The projects undertaken by AFD in the Sahel in 2019 will contribute to:



AGRICULTURE AND RURAL DEVELOPMENT

- **30,000 family farms** supported
- **2,000 hectares** transitioning to agro-ecological systems



ENERGY

- **700,000 people** have access to electrical services



WATER AND SANITATION

- **881,000 people** have access to safe drinking water
- **460,000 m³/day**: drinking water production capacity



EDUCATION

- **1,988,000 children** enrolled in elementary and middle school, 48% are girls



GOVERNANCE

- **70 civil society organizations** benefit from capacity-building initiatives



VOCATIONAL TRAINING

- **17,900 people** have improved access to healthcare



ENVIRONMENT

- **1,200,000 hectares** d'espaces naturels of natural areas benefit from programs for conservation, restoration, or the sustainable management of biodiversity



HEALTH

- **8,200,000 people** have improved access to healthcare



ALLIANCE SAHEL

The Sahel Alliance, a platform for Sahel donors, was launched by President Macron and Chancellor Merkel in 2017. It now brings together 24 members and 10 observers, who together support nearly 900 projects, both pending and completed, for a total amount of €20 billion: €17 billion in pending projects and €3 billion in projects underway.

In addition to the significant amounts committed and under appraisal, the Alliance members are united by a common vision and concepts: the Integrated Territorial Approach adopted by the Sahel Alliance at the Pau Summit in 2020. This approach defines the establishes AFD's intervention methods for the coming years in vulnerable areas.

AFD and its partners are currently working to operationalize this approach in ten pilot areas, with the project leadership for each area distributed between the donors.

AFD is the leader for donors investing in Ménaka in Mali, Hodh Ech Chargui in Mauritania, Tillabéri in Niger, Kanem and Bahr el Gazel in Chad, and Dori in Burkina Faso.

Alliance members also share tools designed to favor joint planning efforts and decision support. For example, AFD's expertise in project mapping, and its management of the analysis and learning platform in the Sahel, will be transferred to the Alliance's Coordination Unit for everyone's benefit.

Application of the Integrated Territorial Approach in Ménaka

In Ménaka, in Mali, where the approach is now well developed, AFD's intervention in the framework of the Integrated Territorial Approach began with an assessment of local and territorial needs (municipalities) to identify priority objectives, such as improving access to water, healthcare, education and economic support.

In 2020, some **10 projects funded by AFD** in this area benefited from:

43

hydraulic structures
to serve 50,000 people

17

schools received support,
which benefited 4,000 pupils

28

healthcare facilities
for 38,000 curative consultations
and vaccinations for 1,400 children

700

farmers benefited from
the operationalization of production
and sales infrastructure in Ménaka city
(markets, slaughter premises, etc.)

MINKA PEACE AND RESILIENCE FUND



An additional 4 million individuals benefited from Minka Sahel and Lake Chad Initiatives.

These two initiatives of the Minka Fund, launched in 2017, represent AFD's response to the crises and violent conflicts threatening countries in the Sahel. They help finance development projects with shorter implementation deadlines and evident results for the population within six months, all for the goal of peace-building.

These projects focused on infrastructure renovation, hydro-agricultural development, highly labor-intensive work projects, and social mediation and peace-building efforts. The projects benefit the most vulnerable individuals (marginalized groups, displaced persons and guest populations).

Minka projects also support activities to benefit youth and promote gender equality.

Minka Sahel

€107M

in grants in 2020

Minka Lake Chad

€7M

in grants in 2020

Towards a world in common

Agence Française de Développement (AFD) implements France's policy in the areas of development and international solidarity. Through funding for the public sector and NGOs, research and publications (Éditions AFD), training on sustainable development (Campus AFD) and efforts to raise awareness in France, it finances, supports and accelerates transitions towards a fairer and more resilient world.

We work alongside our partners to develop shared solutions with and for communities in developing countries. Our teams are involved in more than 4,000 projects on the ground, in France's overseas territories and 115 countries, including areas in crisis. We strive to protect the common good—promoting peace, biodiversity and a stable climate, as well as gender equality, health and education. In this way, we contribute to the commitment of France and French people to support the Sustainable Development Goals (SDG). Towards a world in common.



www.afd.fr

Twitter : @AFD_France - Facebook : AFDOfficiel - Instagram : afd_france

5, rue Roland-Barthes -75598 Paris cedex 12 -France

Tél. : +33 1 53 44 31 31